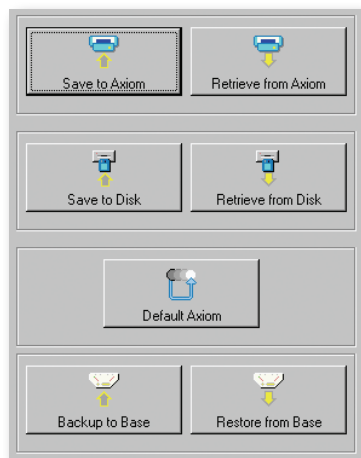


ACCU-SORT®

AXCESS™ Setup Software for AXIOM™ Readers



Provides quick and easy configuration for all AXIOM and AXIOM-X bar code readers.

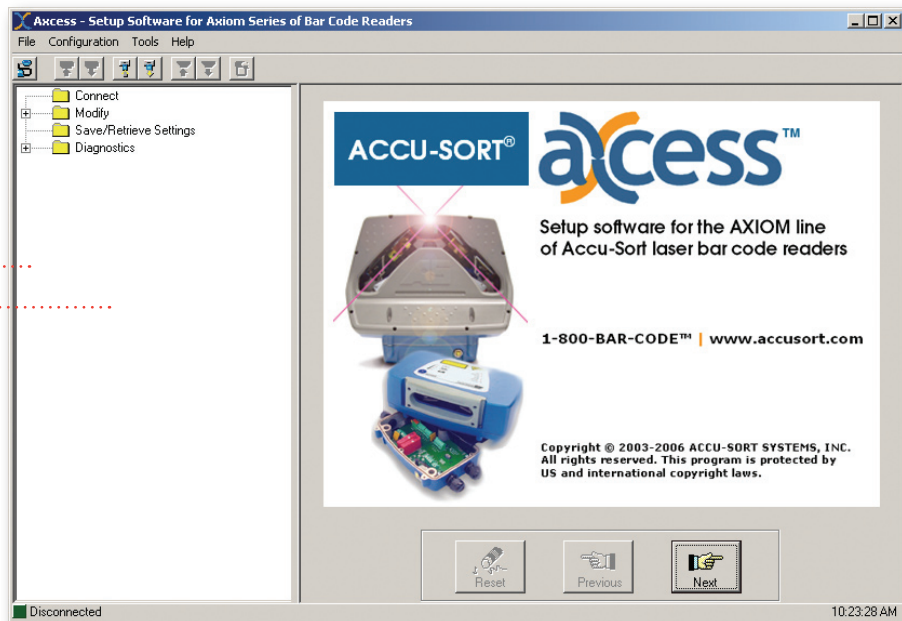
Developed with an intuitive user interface that accommodates first-time as well as advanced users

Efficiently saves configuration parameters to both the scan head and wiring base

Monitors all levels of AXIOM performance in real-time

Operates directly with the programming cable or remotely using network TCP/IP

Supports IBM® or IBM-compatible computers running Windows® 98, NT, 2000 or XP



Overview

AXCESS™ for AXIOM™ Setup Software provides a familiar Windows®-based user interface that enables intuitive and fast configuration of the AXIOM high-speed bar code solutions product line.

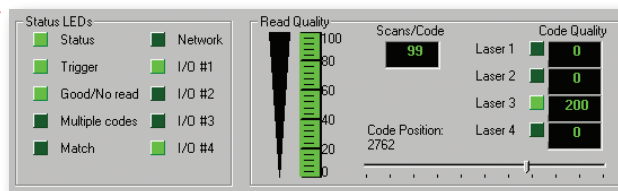
Get Started Quickly with Intuitive Setup Features

Use either the AXCESS Wizard (designed for first-time users) or the AXCESS Explorer (created for advanced users) to configure AXIOM and AXIOM-X readers without the need for onsite service. Simply connect to your scanner via the setup cable or the on-board Ethernet connection.

Specify valid bar code types, groups, and patterns. Pad or strip characters from the decoded string. Define your I/O—including built-in trigger and tach signals and up to four solid state relays. When complete, download your application settings to the scanner and you're ready to go.

Comprehensive Diagnostics Assure Peak Performance

Comprehensive real-time performance indicators and vital statistics are provided



through a single screen, the AXIOM Monitor. Diagnostics include read quality, code quality, box information, a message monitor and 10 status indicators.

Log Viewer provides useful logs including counters, lasers, read rate, and messages.

This feature rich, user friendly combination of quick setup and at-a-glance diagnostics makes AXCESS Setup Software the perfect complement for your AXIOM laser bar code reader.

Image Captions: (TOP LEFT) AXCESS Save/Retrieve Settings buttons allow for quick uploads and downloads of scanner settings. (TOP RIGHT) The AXCESS home screen shows the AXCESS Explorer tree and the AXCESS Setup Wizard buttons. (RIGHT) Just a few of the real-time monitors that show all aspects of your AXIOM's performance.

AXCESS™ Setup Software for AXIOM™ Readers

Configuration

Connect to Axiom
Retrieve Parameters from Axiom
Save Parameters to Axiom

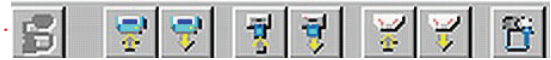
Setup

Drop-down Menus

Offers the Save/Retrieve Settings plus additional features like Advanced Setup, Compare Parameters, and Visual Keyboard (for user-defined message creation).

Toolbar

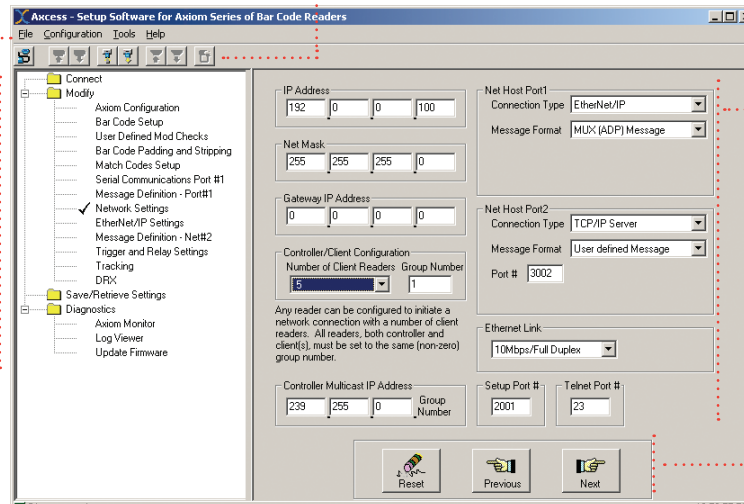
These buttons provide instant access to the connect, save, retrieve, backup and restore functions.



AXCESS Explorer

The navigation list allows advanced users to quickly find the parameters they need to configure or modify.

Use the diagnostics features during normal operations to confirm AXIOM is functioning properly.



Active Window

Displays the next task as defined by AXCESS Wizard or any task selected from AXCESS Explorer. (Network Settings in this example.)

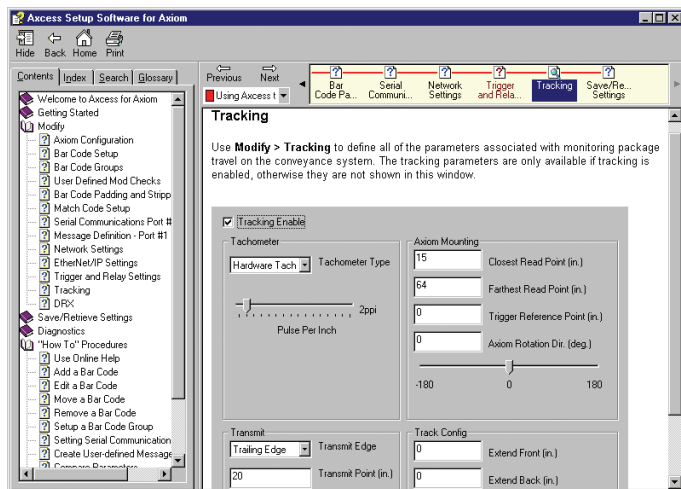
After completing the configuration of an active window, save the changes and proceed with the next step via either AXCESS Wizard or Explorer.

AXCESS Wizard

First-time users will find the wizard easy to use as it steps through the configuration process from start to finish.

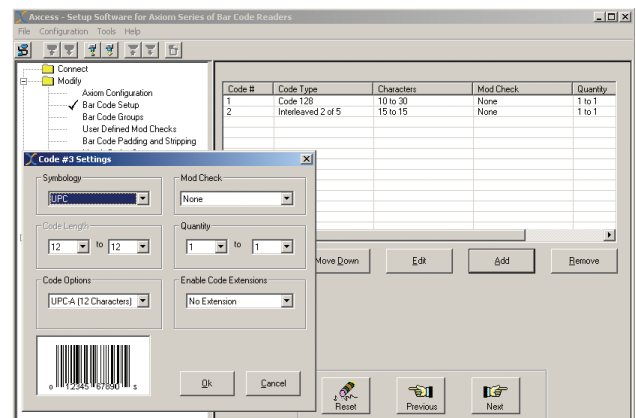
Getting Help is Easy!

AXCESS provides complete online help. Simply access help at any time by:
1) pressing F1 for details on active window or 2) using the Help drop-down menu.



Add, Remove or Edit Bar Codes in seconds!

Use Bar Code Setup to include new bar codes to your list. Or edit existing symbology parameters. A Code Settings window make it a snap!



Specifications

Characteristic	Description
Name/Part Number	AXCESS™ for AXIOM™ Setup Software
Operating System	Compatible with Windows® 98, NT, 2000, XP
Bar Code Parameters	Symbologies, groups, match codes, padding, stripping, mod checks
Communications Parameters	Mode, baud rate, parity, data bits, stop bits, flow control, message
Network Parameters	IP address, netmask, gateway IP, Net Host ports, Ethernet link
Other Parameters	Trigger, I/O relays (4), Tracking, Advanced, DRX
Diagnostics	AXIOM Monitor - Status LEDs, Read Quality, Box Info, Messages Log Viewer - Counters, Read Rate, Messages, Ethernet, Lasers
CD Content	Software, online help, manual PDF, unloader, EDS files
Options	Printed manual available separately

For more information about auto-ID and material handling solutions from Accu-Sort Systems, contact us at:

ACCUSORT® SYSTEMS, INC.
511 School House Road
Telford, PA 18969
1-800-BAR-CODE™

info@accusort.com
www.accusort.com

©2003-2008 Accu-Sort Systems, Inc. All rights reserved.
ACCUSORT, 1-800-BAR-CODE, AXCESS, AXIOM, AXIOM-X and the AS logotype are trademarks or registered trademarks of Accu-Sort Systems, Inc.

Accu-Sort reserves the right to change specifications without notice.